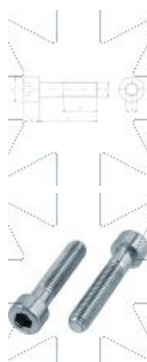
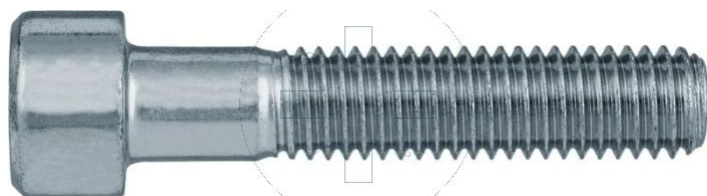


UŽKLAUSIMAS

+370 5 23 06 183

Standartai:

DIN 912
GOST 11738-84
ISO 4762
PN-M 82302



Klas?:

8.8

Pagal užsakym?:

5.8

10.9

12.9

Padengimo tipas:

B

CINKUOTA
DANGA
SU BALTU
PASYVAVIMU

Pagal užsakym?:

A

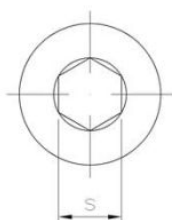
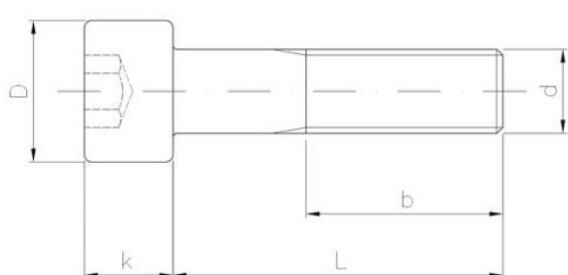
CINKUOTA
DANGA
SU GELTONU
PASYVAVIMU

C

CINKUOTA
DANGA
SU JUODU
PASYVAVIMU

OX

OKSIDAVIMAS



Matmenys

| Material index | d | L [mm] | D [mm] | k [mm] | s [mm] | b [mm] | Mechaninės savybės | Padengimo tipas |
|--------------------|-----|--------|--------|--------|--------|--------|--------------------|--|
| 1107060055B88D912T | M6 | 55 | 10.0 | 6.0 | 5.0 | 24 | 8.8 | B (cinkuota danga su baltu pasyvavimu) |
| 1107100050B88D912T | M10 | 50 | 16.0 | 10.0 | 8.0 | 32 | 8.8 | B (cinkuota danga su baltu pasyvavimu) |
| 1107080045B88D912T | M8 | 45 | 13.0 | 8.0 | 6.0 | 28 | 8.8 | B (cinkuota danga su baltu pasyvavimu) |
| 1107080060B88D912T | M8 | 60 | 13.0 | 8.0 | 6.0 | 28 | 8.8 | B (cinkuota danga su baltu pasyvavimu) |
| 1107120060B88D912T | M10 | 60 | 18.0 | 10.0 | 8.0 | 36 | 8.8 | B (cinkuota danga su baltu pasyvavimu) |
| 1107100060B88D912K | M10 | 60 | 16.0 | 10.0 | 8.0 | 32 | 8.8 | B (cinkuota danga su baltu pasyvavimu) |
| 1107060060B88D912K | M6 | 60 | 10.0 | 6.0 | 5.0 | 24 | 8.8 | B (cinkuota danga su baltu pasyvavimu) |
| 1107080100B88D912K | M8 | 100 | 13.0 | 8.0 | 6.0 | 28 | 8.8 | B (cinkuota danga su baltu pasyvavimu) |
| 1107080080B88D912T | M8 | 80 | 13.0 | 8.0 | 6.0 | 28 | 8.8 | B (cinkuota danga su baltu pasyvavimu) |
| 1107100050B88D912K | M10 | 50 | 16.0 | 10.0 | 8.0 | 32 | 8.8 | B (cinkuota danga su baltu pasyvavimu) |
| 1107060045B88D912K | M6 | 45 | 10.0 | 6.0 | 5.0 | 24 | 8.8 | B (cinkuota danga su baltu pasyvavimu) |
| 1107060050B88D912K | M6 | 50 | 10.0 | 6.0 | 5.0 | 24 | 8.8 | B (cinkuota danga su baltu pasyvavimu) |
| 1107080070B88D912K | M8 | 70 | 13.0 | 8.0 | 6.0 | 28 | 8.8 | B (cinkuota danga su baltu pasyvavimu) |
| 1107080070B88D912T | M8 | 70 | 13.0 | 8.0 | 6.0 | 28 | 8.8 | B (cinkuota danga su baltu pasyvavimu) |
| 1107100055B88D912T | M10 | 55 | 16.0 | 10.0 | 8.0 | 32 | 8.8 | B (cinkuota danga su baltu pasyvavimu) |
| 1107050050B88D912T | M5 | 50 | 8.5 | 5.0 | 4.0 | 22 | 8.8 | B (cinkuota danga su baltu pasyvavimu) |
| 1107120070B88D912K | M12 | 70 | 18.0 | 12.0 | 10.0 | 36 | 8.8 | B (cinkuota danga su baltu pasyvavimu) |
| 1107120080B88D912K | M12 | 80 | 18.0 | 12.0 | 10.0 | 36 | 8.8 | B (cinkuota danga su baltu pasyvavimu) |

| Material index | d | L [mm] | D [mm] | k [mm] | s [mm] | b [mm] | Mechaninės savybės | Padengimo tipas |
|--------------------|-----|--------|--------|--------|--------|--------|--------------------|--|
| 1107060070B88D912T | M6 | 70 | 13.0 | 6.0 | 5.0 | 28 | 8.8 | B (cinkuota danga su baltu pasyvavimu) |
| 1107100070B88D912T | M10 | 70 | 16.0 | 10.0 | 8.0 | 32 | 8.8 | B (cinkuota danga su baltu pasyvavimu) |
| 1107100100B88D912K | M10 | 100 | 16.0 | 10.0 | 8.0 | 32 | 8.8 | B (cinkuota danga su baltu pasyvavimu) |
| 1107080045B88D912K | M8 | 45 | 13.0 | 8.0 | 6.0 | 28 | 8.8 | B (cinkuota danga su baltu pasyvavimu) |
| 1107060040B88D912K | M6 | 40 | 10.0 | 6.0 | 5.0 | 24 | 8.8 | B (cinkuota danga su baltu pasyvavimu) |
| 1107100070B88D912K | M10 | 70 | 16.0 | 10.0 | 8.0 | 32 | 8.8 | B (cinkuota danga su baltu pasyvavimu) |
| 1107060045B88D912T | M6 | 45 | 10.0 | 6.0 | 5.0 | 24 | 8.8 | B (cinkuota danga su baltu pasyvavimu) |
| 1107080090B88D912T | M8 | 90 | 13.0 | 8.0 | 6.0 | 28 | 8.8 | B (cinkuota danga su baltu pasyvavimu) |
| 1107080120B88D912K | M8 | 120 | 13.0 | 8.0 | 6.0 | 28 | 8.8 | B (cinkuota danga su baltu pasyvavimu) |
| 1107080075B88D912T | M8 | 75 | 13.0 | 8.0 | 6.0 | 28 | 8.8 | B (cinkuota danga su baltu pasyvavimu) |
| 1107060055B88D912K | M6 | 55 | 10.0 | 6.0 | 5.0 | 24 | 8.8 | B (cinkuota danga su baltu pasyvavimu) |
| 1107100090B88D912T | M10 | 90 | 16.0 | 10.0 | 8.0 | 32 | 8.8 | B (cinkuota danga su baltu pasyvavimu) |
| 1107120100B88D912K | M12 | 100 | 18.0 | 12.0 | 10.0 | 36 | 8.8 | B (cinkuota danga su baltu pasyvavimu) |
| 1107080120B88D912T | M8 | 120 | 13.0 | 8.0 | 6.0 | 28 | 8.8 | B (cinkuota danga su baltu pasyvavimu) |
| 1107060060B88D912T | M6 | 60 | 10.0 | 6.0 | 5.0 | 24 | 8.8 | B (cinkuota danga su baltu pasyvavimu) |
| 1107120060B88D912K | M10 | 60 | 18.0 | 10.0 | 8.0 | 36 | 8.8 | B (cinkuota danga su baltu pasyvavimu) |
| 1107080050B88D912K | M8 | 50 | 13.0 | 8.0 | 6.0 | 28 | 8.8 | B (cinkuota danga su baltu pasyvavimu) |
| 1107080100B88D912T | M8 | 100 | 13.0 | 8.0 | 6.0 | 28 | 8.8 | B (cinkuota danga su baltu pasyvavimu) |
| 1107080065B88D912K | M8 | 65 | 13.0 | 8.0 | 6.0 | 28 | 8.8 | B (cinkuota danga su baltu pasyvavimu) |
| 1107080050B88D912T | M8 | 50 | 13.0 | 8.0 | 6.0 | 28 | 8.8 | B (cinkuota danga su baltu pasyvavimu) |
| 1107060040B88D912T | M6 | 40 | 10.0 | 6.0 | 5.0 | 24 | 8.8 | B (cinkuota danga su baltu pasyvavimu) |
| 1107100100B88D912T | M10 | 100 | 16.0 | 10.0 | 8.0 | 32 | 8.8 | B (cinkuota danga su baltu pasyvavimu) |
| 1107080040B88D912T | M8 | 40 | 13.0 | 8.0 | 6.0 | 28 | 8.8 | B (cinkuota danga su baltu pasyvavimu) |
| 1107100090B88D912K | M10 | 90 | 16.0 | 10.0 | 8.0 | 32 | 8.8 | B (cinkuota danga su baltu pasyvavimu) |
| 1107100060B88D912T | M10 | 60 | 16.0 | 10.0 | 8.0 | 32 | 8.8 | B (cinkuota danga su baltu pasyvavimu) |
| 1107080065B88D912T | M8 | 65 | 13.0 | 8.0 | 6.0 | 28 | 8.8 | B (cinkuota danga su baltu pasyvavimu) |
| 1107120080B88D912T | M12 | 80 | 18.0 | 12.0 | 10.0 | 36 | 8.8 | B (cinkuota danga su baltu pasyvavimu) |
| 1107100080B88D912K | M10 | 80 | 16.0 | 10.0 | 8.0 | 32 | 8.8 | B (cinkuota danga su baltu pasyvavimu) |
| 1107060035B88D912T | M6 | 35 | 10.0 | 6.0 | 5.0 | 24 | 8.8 | B (cinkuota danga su baltu pasyvavimu) |
| 1107120070B88D912T | M12 | 70 | 18.0 | 12.0 | 10.0 | 36 | 8.8 | B (cinkuota danga su baltu pasyvavimu) |
| 1107100080B88D912T | M10 | 80 | 16.0 | 10.0 | 8.0 | 32 | 8.8 | B (cinkuota danga su baltu pasyvavimu) |
| 1107080040B88D912K | M8 | 40 | 13.0 | 8.0 | 6.0 | 28 | 8.8 | B (cinkuota danga su baltu pasyvavimu) |
| 1107080060B88D912K | M8 | 60 | 13.0 | 8.0 | 6.0 | 28 | 8.8 | B (cinkuota danga su baltu pasyvavimu) |
| 1107060065B88D912T | M6 | 65 | 10.0 | 6.0 | 5.0 | 24 | 8.8 | B (cinkuota danga su baltu pasyvavimu) |
| 1107060050B88D912T | M6 | 50 | 10.0 | 6.0 | 5.0 | 24 | 8.8 | B (cinkuota danga su baltu pasyvavimu) |
| 1107080080B88D912K | M8 | 80 | 13.0 | 8.0 | 6.0 | 28 | 8.8 | B (cinkuota danga su baltu pasyvavimu) |
| 1107080100C88D912K | M8 | 100 | 13.0 | 8.0 | 6.0 | 28 | 8.8 | B (cinkuota danga su baltu pasyvavimu) |